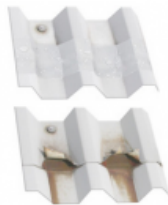


## Re-coating & Repair – The Pearl



Gapple were recently asked at short notice to give a new lease of life to the Pearl at Swansea Dry Dock during its maintenance stop. All topsides were manually prepped and recoating to a very high standard. We also completed painting of the bulwarks and renewed steelworks. Internal doors were removed and stripped back before repainting and replacing. All signage was repainted and the Sea chest floors were shot blasted in readiness for inspections. All preparation and painting works were completed within 4 days to the satisfaction of the customer.

## Main Contractor Services



- ✓ Blast Cleaning
- ✓ Re-signage
- ✓ Re-coating
- ✓ Paint Spraying

- ✓ COSHH Details for all products used
- ✓ Accredited to Safe Contractor & CHAS
- ✓ All Staff carry CSCS card
- ✓ Our supervisors are IPAF & PASMA trained

